

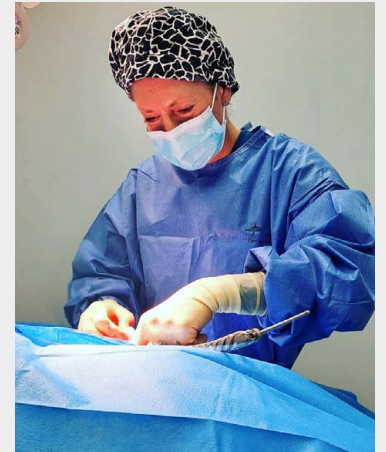
Welcoming Edric and Sam

The summer of 2023 saw the arrival of Edric Cross and Samantha Marshall to our growing team of veterinary surgeons!

Edric joins us from the West Sussex area, bringing with him a wealth of experience in general practice including orthopaedic and soft tissue surgery plus many overseas trips where he still actively enjoys volunteering with the WVS.

Sam's main passion lies in soft tissue surgery, although until recent years she was the lead surgeon for both soft tissue and orthopaedics at a busy hospital in Berkshire. Sam joins us from a multidisciplinary referral centre in Marlow where she has worked until recently.

We feel very lucky to have welcomed Edric and Sam to our existing team of brilliant surgeons – please do say hello if you see them out and about!



Ready, set, resources!

In an effort to constantly provide a high- quality, forward- thinking service, our nursing team have been busy working on a number of different practice resources that we can bring to your team to help your days in clinic run that little bit more smoothly. Radiography holds an important place in every practice's diary so therefore, most recently we have created a pack of **Radiography Guidelines** taking you through each of the steps required to achieve those all-important orthopaedic views. Combined with our **easy-to-use online referral form**, these guides make sending in a patient enquiry really straight forward.

Other resources that can be found on our website include: our **surgical checklists**, **post- op check template**, **setting up guides** for laparoscopy and arthroscopy plus an abundance of **post- op care information sheets** which are brilliant for sharing with clients when their pets are booked in for surgery.



Joint drama? – how can we help you

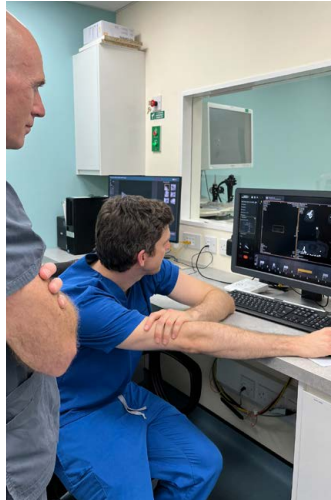
We are lucky to work alongside a number of practices who have recently developed their facility to include advanced imaging. CT scanners allow detailed assessment of multiple regions of a patient's body enabling more in-depth review of an affected site. In particular for our team of orthopaedic surgeons, this modality is used for the assessment of joints, which when combined with physical examination and sometimes radiographs, can be an invaluable diagnostic tool, giving practices the ability when indicated, to create customised guides and implants, like those employed for a humeral transcondylar screw placement.

In recent months, we've teamed up with some of our host practices to offer their clients a clinic service, whereby one of our orthopaedic surgeons consults with the patient and client, obtaining a full clinical history and performing a thorough physical examination, ahead of admission for sedation and a CT scan. When indicated, the clinic set-up allows for patients to remain in their host practice and be prepared for theatre to facilitate joint arthroscopy, a service that we are able to offer in house.

In addition to joint arthroscopy for the management of elbow disease, we can provide advice and support through a regenerative medicine programme if that is deemed an appropriate option for the individual. This can include the extraction of stem cells via a tissue harvest procedure and re- injection of adipose- derived anti-inflammatory stem cells which can be combined with platelet-rich-plasma (a blood derived product prepared using a specialised centrifuge in house) or intra-articular biologics such as Arthrovisc (a viscoelastic lubricant aimed at improving mobility at the joint site).

If you have a patient who you feel could benefit from a CT scan, don't hesitate to get in touch and we can help recommend a facility in your area. Follow-up surgery can be performed at your own clinic or on the same day as CT examination.

We now offer a specialist CT reporting service, offering your team an overview on pathology AND advice on treatment options.



Case example

Young springer spaniel, Josie, presented to us with a thoracic limb lameness localising to the elbow and it was recommended that a CT scan was obtained which revealed she had a humeral intercondylar fissure, a condition seen most frequently amongst our spaniel patient population. Humeral intercondylar fissures are often not visible on plain radiography and CT is a very important tool in their diagnosis. Josie's CT scan was used to produce custom 3D printed drill guides (seen here in the intraoperative photo) allowing us to place a large diameter screw safely across the small corridor of the humeral condyle.



CPD is key



At ProVetSurg, we love to learn! But, we also love to teach! Did you know that we have a series of CPD lectures prepared that we can bring to your practice to deliver in house CPD to your team? Topics including, The management of elbow disease, BOAS – how we can help your patients, The role of a surgical nurse to name but a few.

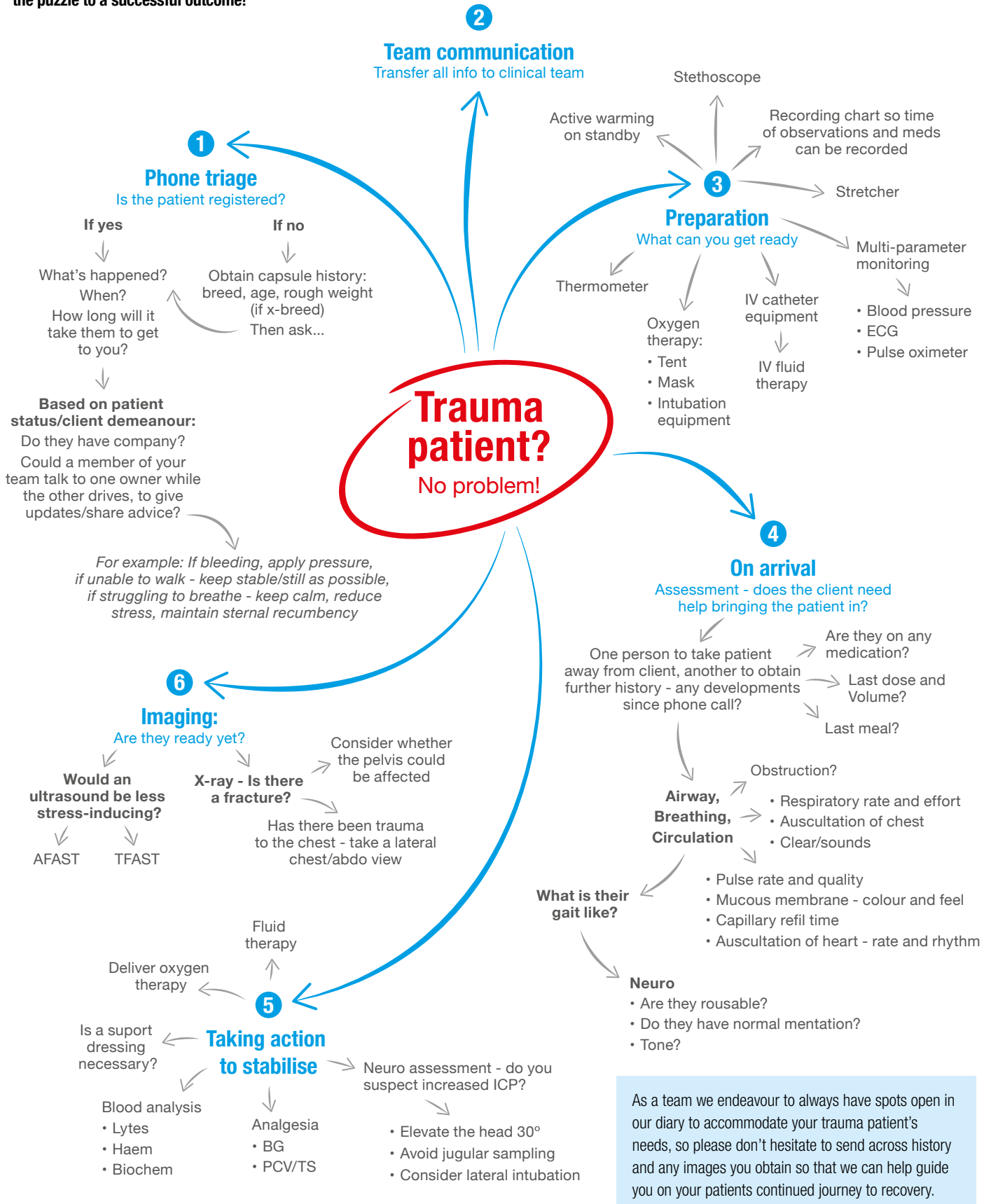
To register your interest in hosting a CPD event, please email info@provetsurg.co.uk.

We're proud to promote excellent client education too so if hosting a client information session is something your practice has thought about, please do get in touch to see how we could help you!



There's an emergency on its way...

When that all important call comes in via reception that you've got a trauma patient on its way in; whether it be following a road traffic accident, fall from a height, kick from a horse or impalement with a stick; it's essential that your team are prepared for all eventualities. We've put together an easy-to-follow, quick-thinking reference guide for the whole team to utilise; as in these instances, each step of the process is a vital piece of the puzzle to a successful outcome!



As a team we endeavour to always have spots open in our diary to accommodate your trauma patient's needs, so please don't hesitate to send across history and any images you obtain so that we can help guide you on your patients continued journey to recovery.

Meet our team

We are so lucky to have such a friendly, approachable and helpful team at ProVetSurg bringing a wealth of knowledge between us. This scoop we all wanted to share with you one of our 'Top Tips' - we hope you find them useful!

Dr Nicci Meadows – Surgeon

BVetMed CertAVP GSAS MRCVS

Despite favouring orthopaedics, one of my top tips relates to entropion or anal sacculotomy surgery – when placing sutures for a Hotz Celsus or anal sacculotomy, leave the tails a little longer, then use a tiny dot of tissue glue to secure them to the skin so they don't tickle or irritate the eye or anal area!



Dr Heidi Burkinshaw – Surgeon

BSc(Hons) BVetMed PgC(SAS) MRCVS

Always opt for a marker with distance indentations when taking orthopaedic radiographs – they're invaluable for measuring pre-op!



Dr Ivan Filipovic – Surgeon

DVM, PgC (SAS)

If you've nowhere to hang your patient's limb for a pre-surgical scrub, fear not – I have a mobile hanging device that we can attach to and from your table, to make light work of this essential prepping stage!



Dr Ana Afonso – Surgeon

DVM GPCert(DI) PgC(DI) MRCVS

When performing ultrasound, clip the area, apply generous amounts of gel with gentle massage and allow 15 minutes prior to scanning- this allows good absorption and improves the quality of the scan immensely!



Dr Sam Marshall – Surgeon

MA VetMB CertSAS MRCVS RCVS Recognised Advanced Practitioner in Small Animal Surgery

No matter how complex your surgical procedure might be, never forget that the clipping lines will be what the client sees first - so make sure they're nice and neat!



Dr Dan Troup – Registrar Surgeon

BSc (Hons) BVSc MRCVS

Rather than using a retractor for distal limb surgery, use a tacking suture to keep the tissues out of your way.



Dr Rob Quinn – Surgeon

BVMS(Hons) CertAVP DipECVS MRCVS Recognised & EBVS European Specialist in Small Animal Surgery

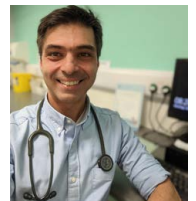
In your BOAS patient's, consider using intra-nasal Otrivine spray post-operatively to relieve nasal congestion



Dr Chris Nikolaou – Surgeon

DVM CertAVP GSAS MRCVS

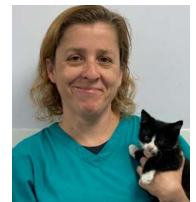
Always include the hock when taking stifle radiographs- in order to measure the tibial plateau angle on a stifle, a line needs to be drawn from the hock to the stifle. Being able to make preoperative measurements on the radiographs in advance helps the surgeon come prepared to the practice



Dr Ana Murta – Surgeon

MSc, PgC SAS, MRCVS

When spaying bitches via a traditional approach, leave the end of the ovarian ligature very long and clamp it with forceps while you assess for any bleeding – a great tip to use before closure when you can trim the ligature shorter once you're happy there's no bleeding



Dr Edric Cross – Surgeon

BVetMed CertSAS MRCVS RCVS

For abdominal surgery, always clip wide margins – this way if you do face a challenge, you can extend your incision without the worry that you're entering a non-prepped area of the body!



Bev Morgan – Surgical Nurse and Case Coordinator

RVN

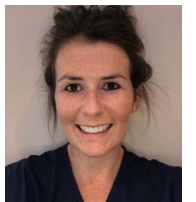
For the quickest response when referring your patients, always accompany your x-rays with a clinical history including patient weight where possible!



Lauren Houghton – Surgical Nurse and Case Coordinator

RVN CertVNECC

Does bilateral thoracic limb surgery leave you wondering where to pop your ECG pads? Place them on the underside of the ear pinna's securing them in place with a piece of micropore tape!



We are on Instagram, LinkedIn and Facebook – catch the latest news on our social pages



info@provetsurg.co.uk

